



# Power Perfection

## Other Equipment in the Atritor Range

Atritor-Scott AST Dryer for Chemicals, Minerals, Industrial and Environmental Waste.



"A" & "B" Series Atritor Dryer-Pulverisers for Chemicals & Minerals.

Cell Mill for Fine Grinding, Drying, Deagglomeration, Classification & Coating of Fine Chemicals, Minerals & Food Products.



Classifier Mill for Chemicals, Minerals, Food & Pharmaceuticals.

Spiral Jet Microniser for Chemicals, Minerals, Food & Pharmaceuticals



### Website

For more information about the company visit our website [www.atritor.com](http://www.atritor.com) or send us your enquiry Email: [sales@atritor.com](mailto:sales@atritor.com)

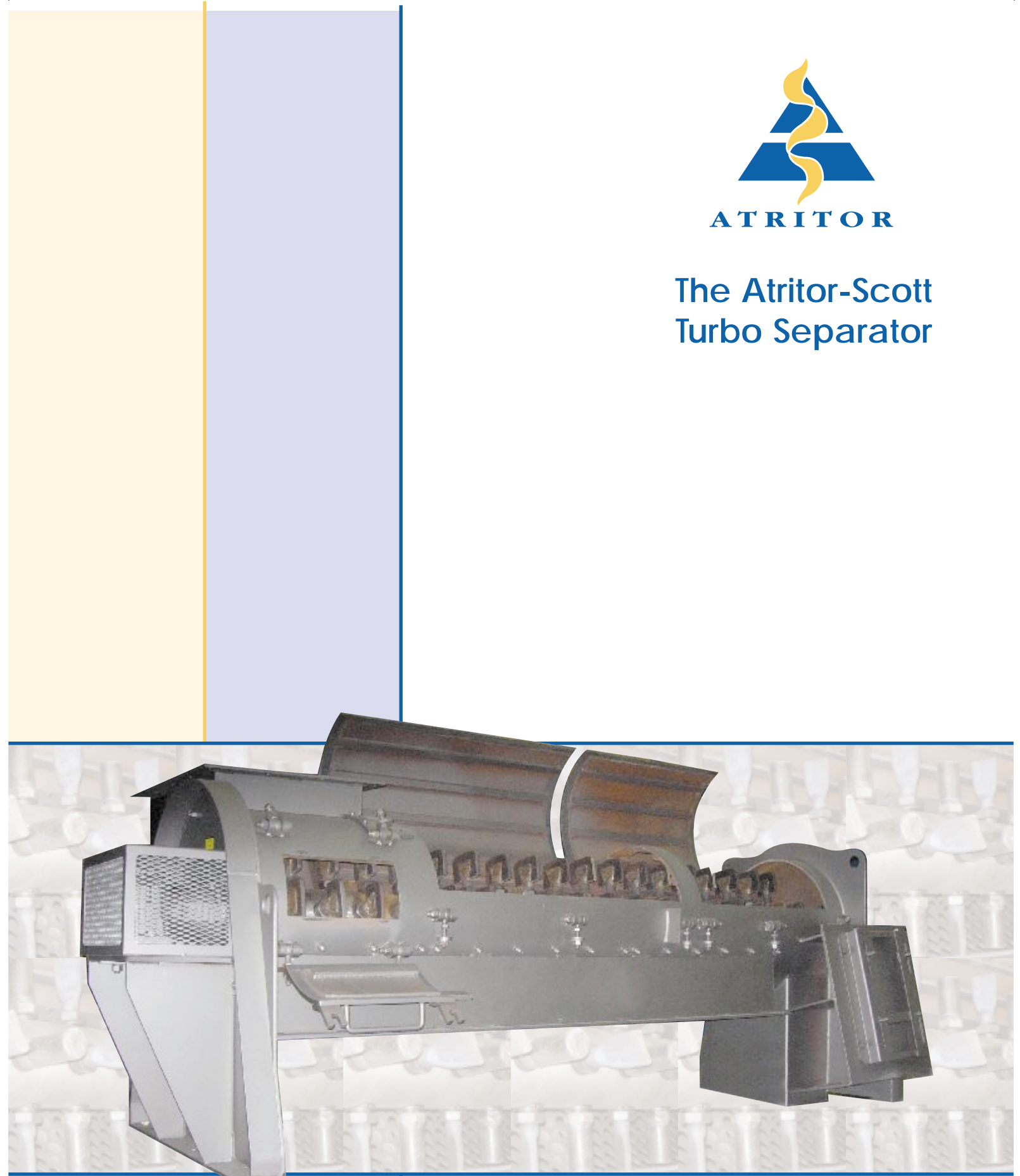


### Atritor Limited

PO BOX 101  
Edgwick Park  
Coventry  
CV6 5RD  
U.K.  
Tel: +44 (0) 2476 662266  
Fax: +44 (0) 2476 665751



## The Atritor-Scott Turbo Separator



Separates Product from Packaging for Recycling or Disposal



## Turbo Separator Technology

### Diversification into Product Separation

Atritor Ltd. in addition to its core business, providing Drying, Milling and Classification equipment for the powder processing industries, has recently diversified into the field of product separation for Foods, Household, Industrial Products and related items.

In response to concerns about landfill restrictions and product disposal problems, our revolutionary Turbo Separator has the capability to reclaim up to 99% of dry or liquid products from their packaging.



The Atritor Turbo Separator is ideal for 'out of spec', dated or mislabelled products, whether packaged in corrugated cartons, plastic bottles or metal cans.

The diverse range of applications includes the separation of paper and gypsum in plasterboard for waste gypsum recovery, steel from pyrolised tyres and general foodstuff from packaging.

It offers a significant reduction in waste disposal costs, and enables both the product and the packaging to be recycled.

The Atritor Turbo Separator can help to achieve lower disposal costs by shredding waste products, as well as cost savings, as labour costs for de-packaging are minimised and product loss is reduced.

An additional benefit for users is the proactive protection of the environment by a significant reduction in waste.



### Operating Principle

The materials to be separated are introduced into the unit via a flanged inlet, then cycled through the Turbo Separator's agitator.



The variable speed, along with the design features of the beater blades and breaker bars, separate the product from its packaging.

The materials are routed through a central discharge where the product is screened out. Various screens are available depending upon the product's size and consistency.

The packaging material continues through the cylinder to an end discharge for disposal or recycling.



## Product & Packaging Separator

### Features

- Durable construction and adjustable paddles enable the processing of a wide variety of products.
- Revolutionary tubular design allows for efficient product switch-over without cross-contamination even where strict purity standards must be maintained.
- Custom manufactured with various inlet and discharge designs to meet specific processing needs.
- Variable speeds from 200 to 2500 rpm.
- Fabricated from either carbon steel or 304 stainless steel.
- Optional sanitary design.
- Available in capacities from 1 ton to 40 tons per hour.
- Water manifold may be installed for clean-in-place capabilities.
- Collection and discharge hoppers available.
- Up to 99% efficient in product recovery.



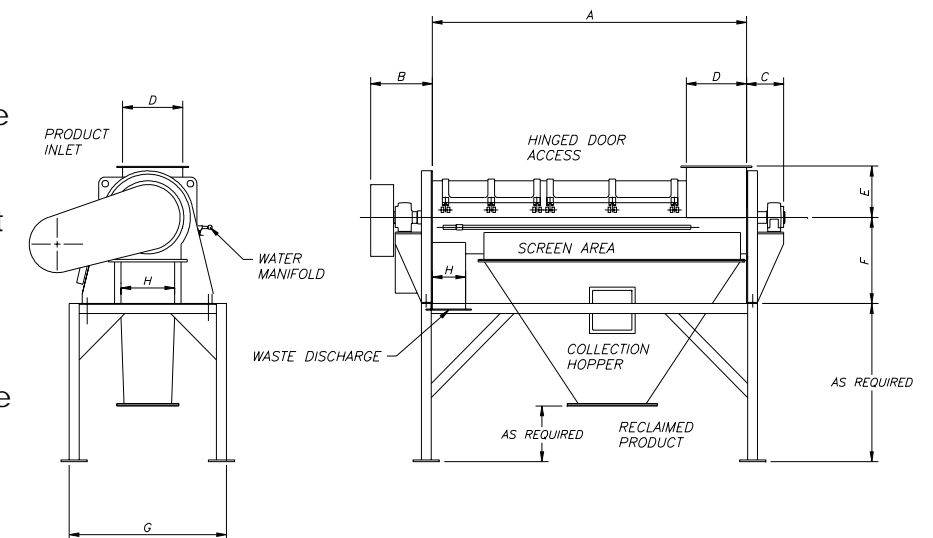
### Turbo Separator Dimensions

|      | SIZE       | A    | B   | C   | D   | E   | F   | G    | H   |
|------|------------|------|-----|-----|-----|-----|-----|------|-----|
| 1672 | 400 X 1800 | 1800 | 450 | 250 | 300 | 330 | 610 | 915  | 350 |
| 1696 | 400 X 2440 | 2440 | 450 | 250 | 300 | 330 | 610 | 915  | 350 |
| 2072 | 510 X 1800 | 1800 | 510 | 300 | 350 | 380 | 660 | 1020 | 460 |
| 2096 | 510 X 2440 | 2440 | 510 | 300 | 350 | 380 | 660 | 1020 | 460 |
| 3072 | 760 X 1800 | 1800 | 560 | 350 | 460 | 510 | 820 | 1270 | 610 |
| 3096 | 760 X 2440 | 2440 | 560 | 350 | 460 | 510 | 820 | 1270 | 610 |

NOTE: Dimensions are for reference only. Additional sizes are available upon request.

### Test Facilities

To ensure customer confidence in the capabilities of Atritor equipment and processes, we operate a comprehensive pilot plant in Coventry where all of our equipment can be fully evaluated. The plant is predominantly full size so all scaling is done within the range of production equipment.



### Typical Applications:

- |            |            |                    |                 |                 |            |
|------------|------------|--------------------|-----------------|-----------------|------------|
| Beans      | Cigarettes | Deodorants         | Oil Filters     | Processed Meats | Soups      |
| Beverages  | Coleslaw   | Detergents         | Pasta           | Potato Chips    | Sugar      |
| Biscuits   | Coffee     | Gravy Granules     | Pet Foods       | Powdered Milk   | Tea        |
| Baby Foods | Cosmetics  | Household Products | Pharmaceuticals | Sachets         | Vegetables |
| Cereals    | Custard    | Insecticides       | Plasterboard    | Sauces          | Yogurt     |